

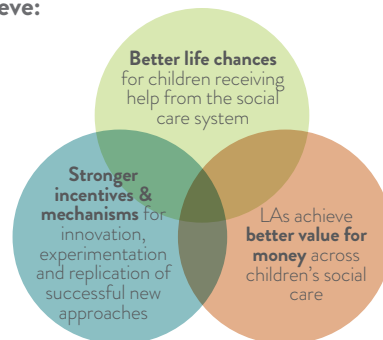
THE CHILDREN'S SOCIAL CARE INNOVATION PROGRAMME

The Children's Social Care Innovation Programme is a two year programme supported by £100m.

The programme will explore and support the delivery of innovative approaches to improve outcomes for children.

OBJECTIVES

The Innovation Programme seeks to inspire whole system change so that in five years we achieve:



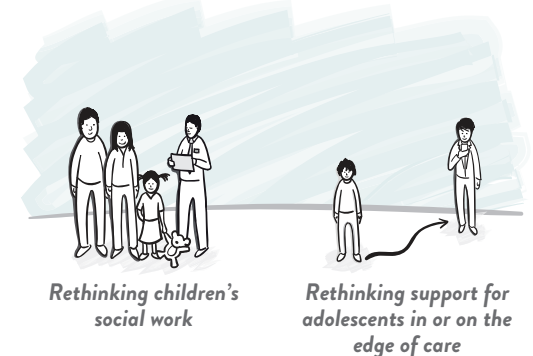
HOW IT WORKS

The programme will work in 2 main ways:

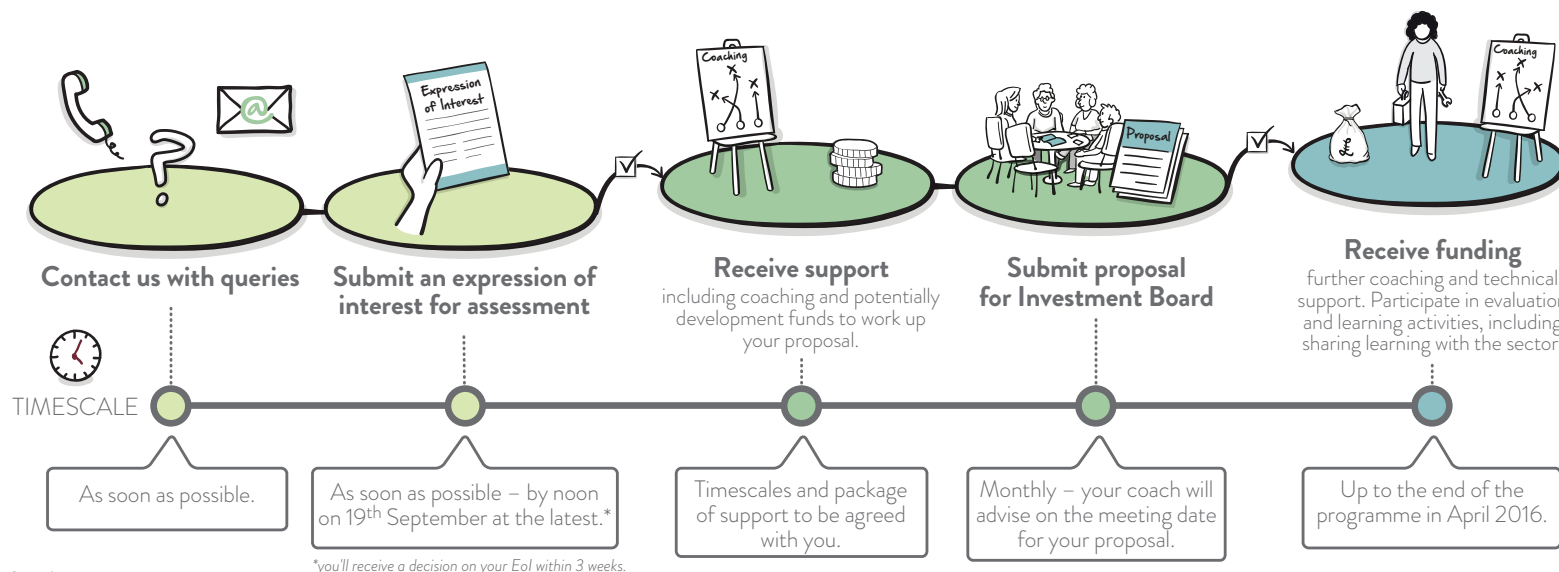
- Supporting individual pilots and change programmes** which test or spread much more effective ways of supporting vulnerable children.
- Changing conditions in the system** so that it is better able to innovate in future and drive sustained improvements in outcomes for vulnerable children.

AREAS OF FOCUS

The Innovation Programme has two particular focus areas:



THE PROCESS



CRITERIA

We are looking for proposals that:

